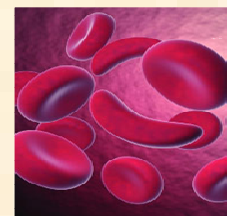


Sickle Cell Transition Club



Wednesday 1st April 2015

Wandsworth Sickle Cell & Thalassaemia Support Group

The Office:

15 Broadwater Road, Tooting, London, SW17 0DS

Time: 4–7 pm



Programme

- ◆ Moving on:
- ◆ Peer support group
- ◆ Refreshments
- ◆ Table Tennis
- ◆ Snooker

Call or email to book

0208 812 6238

beverley.telesford@stgeorges.nhs.uk



Sutton and Merton



