

Wandsworth Sickle Cell And Thalassaemia Support Group

Registered Charity: 1048968

W S C T S G

Summer Barbecue

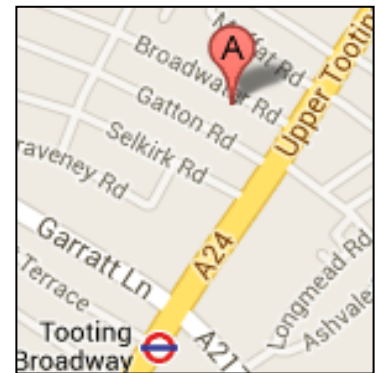
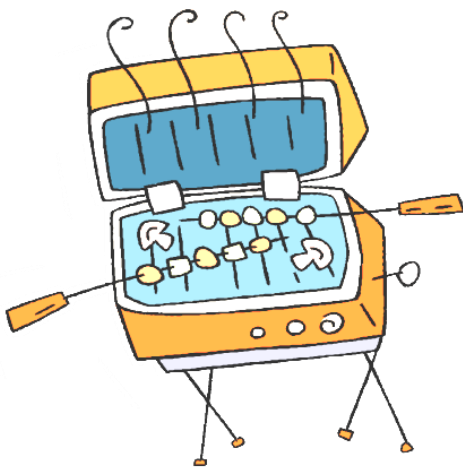
*Join us for the WSCTSG barbecue on
15th August 2015, 1pm -6pm*

Members, families, and friends are invited to come
along for **BBQ**, **Activities**, **Raffle** + **more**

Let us know if you can bring a dish to share!

**Wandsworth Sickle Cell and Thalassaemia
Support Group
15 Broadwater Road, Tooting, SW17 0DS**

(opposite St Augustine's Church)



**RSVP by 8th August to:
020 8682 9489 / 07960 229660 /
wsctsg@btinternet.com**